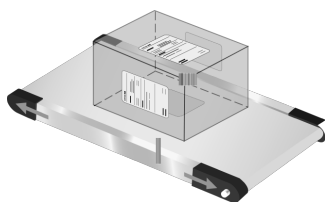


70L



Application **Carton / Pallet / Flexible Package / Bag / Plates**

Position **Top / Side / Bottom**

Big

180 mm label width, 900 m label capacity and 1200 m ribbon capacity.

Robust

Servo-Print™ technology, high-performance and excellent stability.

Universal

30 x 30 ~ 180 x 300 mm label size. Direct wipe-on print and apply, fast and easy.

70L

Wipe-On DGM Printer Applicator

Printing

Print Method	Thermal Transfer
Print Resolution	11.8 d/mm (300 dpi)
Maximum Print Width	168 mm (6.6 inch)
Maximum Print Speed	300 mm/s (11.8 ips)
Barcode Symbologies	All major 1D and 2D barcodes
Graphic	BMP format
Ribbon Roll	115 mm O.D., 25.4 mm I.D., total length about 1200 m
Ribbon Type	Resin, Wax-Resin

Operating Characteristics

Operating Temperature	0°C ~ +40°C
Storage Temperature	-40°C ~ +80°C
Humidity	5% ~ 90% R.H., non-condensing
Dimensions	L 641 mm x H 690 mm x W 473 mm
Weight	55 kg
Electrical Power Supply	90-264VAC, 47-63 Hz, 600W
Compressed Air Supply	No Need

Standard Configuration

Print and Apply Engine	Hot 7R 168 mm x 11.8 d/mm, Right-hand, Thermal Transfer
Labeling Plate	Hd-02 Universal type with wipe brush
HMI	10 inch Touch Screen Panel PC with Linux OS
Micro-controller	CC 7.0
Data Interface	Ethernet 1000Mbps, USB 2.0
Control Interface	3 pin photoelectric input 4 pin alarm output 10 pin I/O expansion port
Warranty	12 months
Pinthead Warranty	12 months or 30 km, whichever comes first

Labeling

Labeling Mode	Wipe-On
Print and Apply Cycle Time ¹	0.4 Second per Label
Print and Apply Output ²	150 ppm (packages per minute)
Labeling Tolerance	± 0.5 mm
Label Roll	400 mm O.D., 76 mm I.D., total length about 900 m
Label Types	Die-cut Self-adhesive Labels
Label Width	30 ~ 180 mm
Label Length	30 ~ 300 mm

Computing

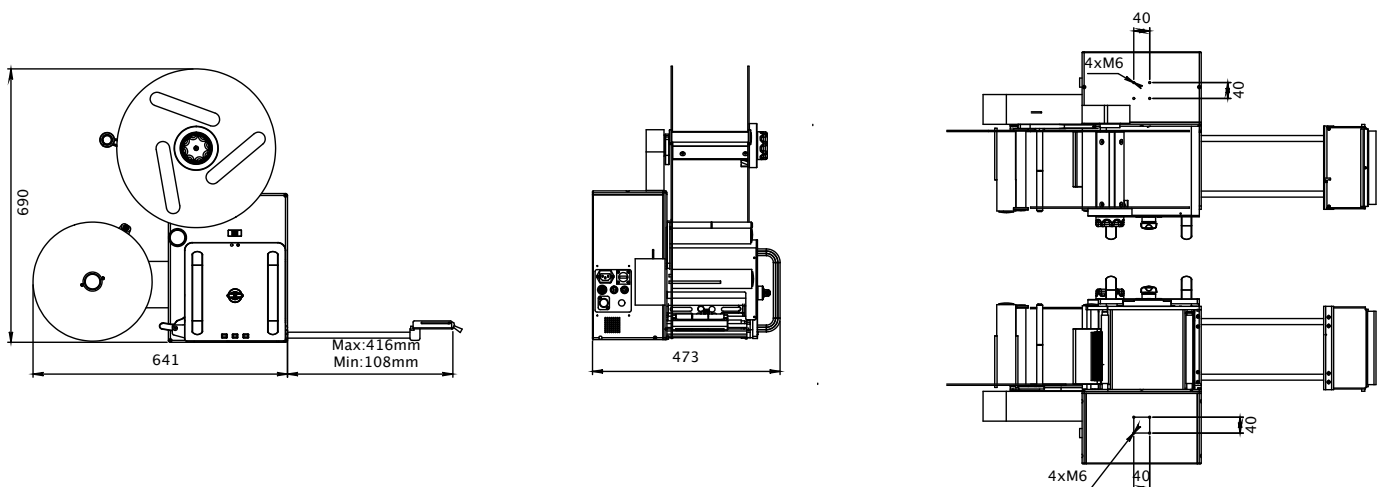
Print and Apply Software	OPEXE® CHI 2.0
Label Design Software	OPEXE® Label 3.0
Command Language	CPL (COTAO Printing and Labeling Language), ZPL

Options and Accessories

Print and Apply Engine	Hot 7L 168 mm x 11.8 d/mm, Left-hand, Thermal Transfer
Labeling Plate ³	Special wipe brush and wipe roller
HMI	12+ inch Touch Screen Panel PC with Windows OS
Mounting Stand ⁴	K-Base Assemble Steel Pipe Stand with Casters T-Base Fixed Height Welded Stand H-Base Manual Adjustable Welded Stand X-Base Manual Adjustable Welded Stand (X-Z Axis) Y-Base Manual Adjustable Welded Stand (Y-Z Axis) E-Base Electric Adjustable Welded Stand
Software ⁵	OPEXE® Printing , OPEXE® Scanning OPEXE® Weighting , OPEXE® Packing
Ribbon	Resin or Wax-Resin, 110/176 mm Width x 1200 m Length

COTAO®

Print Engines



1. The actual print and apply cycle time is related to factors such as label size, stroke length, data processing and transmission time;
3. Special labeling plates can be customized according to working conditions and customer needs;
5. Printing and labeling application software and software integration interface can be customized according to customer needs;
7. We reserve the right to amend the design and/or specifications of our products without notice.

2. The actual print and apply output is related to the size change of the labeled objects, loading/unloading, sorting and positioning time;
4. Special stand or closed frames can be customized according to working conditions and installation requirements;
6. COTAO and OPEXE® are trademarks of COTAO Technologies Co., Ltd. All rights reserved.