

CONUS 1100



Digital servo control

Thermal printing unit, print and apply immediately, eliminate printing, coding, data association and labeling errors

Digital servo control labeling engine to feed labels, achieve high-speed printing

Digital servo control belt line conveyor, adapt to different speed and beat requirements

COTAO CPL printing and labeling command set, users can independently develop printing and labeling applications

Flexible, versatile and efficient

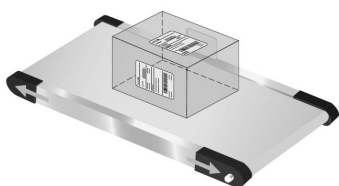
Compact structure, flexible installation, space saving

Adapt to express and logistics packaging and label specifications of different specifications and materials

OTA online upgrade function to meet personalized fully automatic printing and labeling tasks

7x24 hours continuous, high-speed, fully automatic labeling

The fastest speed is 60 packages of express labeling per minute



Application **Carton / Bag / Flexible Package**

Position **Top**

CONUS 1100

Logistics Packaging Printer

Labeling Specifications

Labeling Mode	Wipe-On	Labeling drive	Servo Motor
Height of the object	10~450 mm	Width of the object	50~450 mm
Length of the object	125~1000 mm	Weight of the object	0.1~30 kg
Label Width	20~110 mm	Label Length	20 ~300 mm
Labeling Tolerance	± 2 mm	Fastest Labeling Speed	60 packages/minute

Conveying performance

Conveying speed	0~35 m/min	Conveyor belt drive	Servo Motor
Height of conveying surface from ground	550 mm	Conveyor belt width	500 mm
Conveyor belt length	750 mm	Equipment length	1650 mm

Standard Configuration

Standard Configuration	<p>HOT 1R Print and Apply Engine: 110 mm, Right Hand</p> <p>Direct Thermal printing unit: 104 mm * 8d/mm</p> <p>Label unwinding module: 76 mm I.D., 370 mm O.D.</p> <p>winding module: 45 mm I.D, 175 mm O.D.</p> <p>Hd-01 Adjustable Length Peel Plate: 110*300 mm</p> <p>OPEXE® CHI Print and apply engine software, Can configure, debug and monitor equipment operation offline or remotely</p> <p>Digital servo driven belt line, 0~35 m/min, front and rear connected to non-powered roller line (detachable)</p>
Data Interface	Standard Gigabit Ethernet port
Industrial control interface	10-pin I/O input and output (including input signal for starting printing and labeling, output signal for labeling completion, labeling error, etc.), 4-pin alarm light output, 3-hole photoelectric input
Electrical Power Supply	110-240 V single phase AC, 50-60 Hz, 500W
Compressed Air Supply	No Need
Dimensions	1650mm(L) x 810mm(W) x 1300mm(H)
Weight	80 kg
Options and Accessories	<p>OPEXE® Label 3.0 Label editing software, users can customize label templates, barcodes, text, pictures and change data sources</p> <p>OPEXE® Printing Distribute printing tasks in real time, monitor printing progress, and automatically save printing and labeling job records</p> <p>OPEXE® Scanning Supports print after scanning, scan after printing and scan after labeling three modes</p> <p>OPEXE® Weighting Real-time acquisition of data from scales or weighing modules for label printing</p> <p>OPEXE® Packing Collect the son-level barcode and automatically generate the father-level barcode label to establish a complete packaging genealogy relationship</p> <p>Customized development of printing and labeling application software and software integration interface according to customer needs</p> <p>Barcode scanner, realizing functions such as automatic barcode recognition and printed content detection</p>

COTAO®

Print Engines

*Technical parameters and other technical information are subject to change without prior notice